



Information for the participating Teams



Vijkampaan 22
5624EB Eindhoven
The Netherlands

15 courts

EUROPEAN TEAM CHAMPIONSHIPS DIVISION 1 & 2

27 April - 30 April 2022

Eindhoven, The Netherlands



Klokgebouw 50
5617AB Eindhoven
The Netherlands

Glasscourt





FOREWORD FROM HUGO HANNES, ESF PRESIDENT

On behalf of the European Squash Federation I would like to welcome you all - players, coaches, referees, team managers, press officers, sponsors, officials and spectators - to SquashTime in Eindhoven, The Netherlands, the host venue for the European Team Division 1 & 2 Championships 2022. After two years of pandemic during which in many European countries squash wasn't allowed to be played, it is great to see you all back on court again competing for your country.

As President of the European Squash Federation I wish to thank all nations and competitors for entering this year's European Team Championships, the 48th Men's and 43th Women's Championships. We are delighted to welcome the best European men's and women's teams to these Championships and we are pleased to see 20 European member nations represented by Division 1 & 2 teams: 20 men's teams and 16 women's teams. No wonder ESF regards them as the showcase of squash in Europe, because it is the largest team event in the world! The players and the coaching staff are here to play your best squash and perform well, but it also gives you a chance to share thoughts and ideas from different cultures and backgrounds. 'Walk together, talk together and then you will have peace' is a message we strongly believe in.

The people in the tournament office and the members of the organising committee will be at your service during the Championships and I am certain that they will make you enjoy your sport and give you a good competition. My special thanks to Peter Berden, Championships Director and his team and also thanks to Barry Brindle, the ESF Event Director and the TSO Pavel Sladeczek for their time and input. The "Squash Bond Nederland" organized many of these events in the past and I am sure you will all have a wonderful feeling this coming week.

I express my gratitude towards SquashTime, all supporting organisations, sponsors and the many volunteers that have supported this event. Especially I wish to thank the Squash Bond Nederland, the official host of these European Team Championships Division 1 & 2.

May I wish you all a fine time in Eindhoven and especially a number of exciting matches. Being a good sport on and off court involves showing respect for the many hours the organising committee have put into this event.

I look forward meeting you during the official functions, meetings, but especially during the matches.

Enjoy your game and be proud to represent you country again after 3 years of silence!



On behalf of the Board of Directors
Hugo Hannes
President European Squash Federation





Welcome to SquashTime in Eindhoven.

Nouran Gohar (Egypt), Diego Elias (Peru), Edgbaston Priory Squash Club (England), Paderborn Squash Club (Germany), England U15 and U17. All players have come to Eindhoven in recent years to compete at the highest level for the World Championship and European Championship titles.

And just 2 weeks ago we were able to celebrate the new European champions in the U19. Finnlay Withington, Katie Malliff and the England squad brought all titles to the UK.

That all happened at SquashTime.

We also saw the world top play their first round matches during the DPD PSA Open 2019, after which the enormously strong field moved to an insanely beautiful location, the new distribution center of our main sponsor DPD. Raneem El Weillily and Ali Farag won the main prize there.

This time we have again committed ourselves to being a host. Which countries will soon be the successors of the French women and the English men? Partly because of Covid, they have been the champions for 3 years now. Fortunately, they can now fight again and try to defend their titles.

We, ESF, SBN, referees and all volunteers, will do our utmost to let you have an unforgettable time and hope for exciting matches for you and lots of viewing pleasure for the public.

Have a good time in Eindhoven!

Peter Berden

Championship Director





Tournament Staff

ESF Event Director

Barry Brindle

+350 57230000

barry.brindle@europeansquash.com

Championship Referee

Tomáš Hrázský

+48 698437762

thrazsky@gmail.com

Championship Director

Peter Berden

+31 622699977

berdenp@gmail.com

Tournament Office

Isa Polman

+31 618571337

isa@squashbond.nl

Contact Venue SquashTime

Sjef van der Heijden

+31 628125444

squashsjef@gmail.com

Contact Venue Het Klokgebouw

Tom Lucas

+31 623259049

tom@squashbond.nl

ESF Technical Software Operator

Pavel Sladeczek

Team orders

europeansquash@hotmail.com

Championship Adjudicating Panel (CAP)

Barry Brindle Chairman

Tomáš Hrázský Member

Peter Berden Member

The CAP will hear all appeals and will be responsible for adjudicating on all on-site Championship matters.
The decision of the CAP will be final.





Where do you stay ?

Hotel Campanile

Noord Brabantlaan 309

5657GB Eindhoven

<https://eindhoven.campanile.com/nl-nl/>

+31 40 2545400

Tulip Inn Eindhoven Airport

Luchthavenweg 27

5657EA Eindhoven

<https://tulip-inn-eindhoven-airport.goldentulip.com/nl-nl/>

+31 40 3030615

There is free WIFI in all rooms.

The Hotel/Food package covers accommodation and meals for players, managers, coaches and supporters as submitted on the entry forms. Breakfast in te hotel, lunch and dinner at Squashtime.

All participants must settle the bill for all extras at the hotel reception before departure.

If you want extra rooms etc. please contact Ita van der Heijden who is handling the hotel arrangements. Call of email :

+31 40 2411411 itasquashtime@gmail.com

Transport

Transport will be provided between Eindhoven International Airport and Eindhoven Central Station and the hotel and following the event from the hotel to the airport or train station for the players, teammanagers and officials.

During the Championship there will be regular transport by bus between the hotel and Squashtime.

Team Managers are required to provide the Championship Office with departure details, 48 hours before leaving.





Schedule BUS 1

Time		Time		Time			
		08.00	Campanile Hotel	08.15	Het Klokgebouw		
08.30	Squashtime	08.45	Campanile Hotel	09.00	Het Klokgebouw		
09.15	Squashtime	09.30	Campanile Hotel	09.45	Het Klokgebouw		
10.00	Squashtime	10.15	Campanile Hotel	10.30	Het Klokgebouw		
10.45	Squashtime	11.00	Campanile Hotel	11.15	Het Klokgebouw		
11.30			Restperiod				
12.30	11.30-13.00		Restperiod				
13.00			Restperiod				
13.00	Squashtime	13.15	Tulip Inn	13.30	Campanile	13.45	Het Klokgebouw
14.00	Squashtime	14.15	Campanile	14.30	Het Klokgebouw		
14.45	Squashtime	15.00	Campanile	15.15	Het Klokgebouw		
15.30	Squashtime	15.45	Campanile	16.00	Het Klokgebouw		
16.15	Squashtime	16.30	Campanile	16.45	Het Klokgebouw		
17.00			Restperiod				
18.00	17.00-18.30		Restperiod				
18.30			Restperiod				
18.30	Squashtime	18.45	Tulip Inn	19.00	Campanile	19.15	Het Klokgebouw
19.30	Squashtime	19.45	Campanile	20.00	Het Klokgebouw		
20.15	Squashtime	20.30	Campanile	20.45	Het Klokgebouw		
21.00			Restperiod				
21.30	21.00-21.30		Restperiod				
				21.45	Het Klokgebouw		
22.00	Squashtime	22.15	Tulip Inn	22.30	Campanile		

<https://eksquash.nl/>





Schedule BUS 2

Time		Time		Time			
		08.15	Tulip Inn	08.30	Het Klokgebouw		
08.45	Squashtime	09.00	Tulip Inn	09.15	Het Klokgebouw		
09.30	Squashtime	09.45	Tulip Inn	10.00	Het Klokgebouw		
10.15	Squashtime	10.30	Tulip Inn	10.45	Het Klokgebouw		
11.00	Squashtime	11.15	Tulip Inn	11.30	Het Klokgebouw		
11.45	Squashtime	12.00	Tulip Inn	12.15	Campanile	12.30	Het Klokgebouw
12.45			Restperiod				
13.45	12.45-14.15		Restperiod				
14.15			Restperiod				
14.15	Squashtime	14.30	Tulip Inn	14.45	Het Klokgebouw		
15.00	Squashtime	15.15	Tulip Inn	15.30	Het Klokgebouw		
15.45	Squashtime	16.00	Tulip Inn	16.15	Het Klokgebouw		
16.30	Squashtime	16.45	Tulip Inn	17.00	Het Klokgebouw		
17.15	Squashtime	17.30	Tulip Inn	17.45	Campanile	18.00	Het Klokgebouw
18.15			Restperiod				
19.15	18.15-19.45		Restperiod				
19.45			Restperiod				
19.45	Squashtime	20.00	Tulip Inn	20.15	Het Klokgebouw		
20.30	Squashtime	20.45	Tulip Inn	21.00	Het Klokgebouw		
21.45	Squashtime	22.00	Tulip Inn	22.15	Campanile		
			Restperiod				
			Restperiod				

<https://eksquash.nl/>





Pickup Point Tulip Inn Hotel



You can find the draws, matches and results on the ESF Tournament Software website :

<https://esf.tournamentsoftware.com/sport/tournament.aspx?id=1C1CB049-4226-4D89-8E4A-8395A66CA835>

Wifi at SquashTime

Guesten Fritz

Password: Welkom123



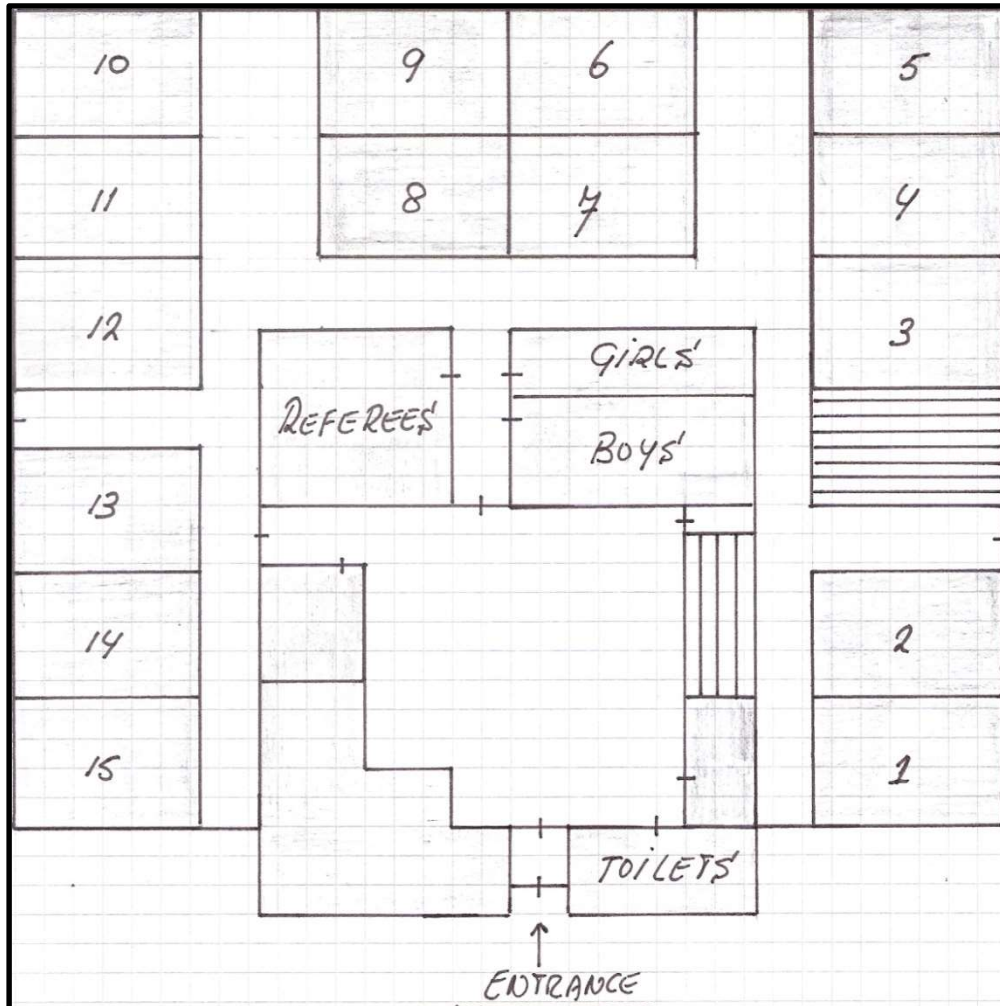


Schedule and Functions ETC 1&2

Tuesday	26 April 2022	Arrival/Accreditation	
		Opening ceremony	18.00 - 18.45 Het Klokgebouw
		Dinner	19.00 - 21.00 Squashtime
		Managers Meeting	19.45 - 20.30 Squashtime
		Referees Meeting	20.30 Squashtime
Wednesday	27 April 2022	Start tournament	10.00
		Matches	10.00 - 19.00
			Pool stages
Thursday	28 April 2022	Matches	10.00 - 19.00
			Pool stages +
			Quarterfinals Men Division 2
Friday	29 April 2022	Matches	10.00 - 19.00
			Semi finals
Saturday	30 April 2022	Matches	09.00 - 14.00
			Finals
Note	Pricegiving + Closing ceremony on glasscourt after the men's final		
	Closing dinner and party at Het Klokgebouw		
Sunday	1 May 2022	Departure	



15 Squashcourts in Squashtime



As you can see above, we have 15 courts available. 8 are used in each round. To be used are: 2, 4, 5, 6, 7, 8, 9, 10, 11, 13 and 14.

The finals of Division 2 will be played at number 2. This is a showcourt, with stands at the back and on one side.

Courts 3 and 12 are intended to put the bags away. Do that on the left, so that you can use the right for warming-up and cooling-down.

The remaining courts are available for practice. These can be reserved at the reception.



Participating Countries

Women's Division 1							
Pool A							
	England		France		Scotland		Finland
Pool B							
	Belgium		Wales		Netherlands		Germany



Men's Division 1							
Pool A							
	England		France		Wales		Finland
Pool B							
	Spain		Scotland		Germany		Czech Republic



<https://eksquash.nl/>





Participating Countries

Women's Division 2							
Pool A							
	Switzerland		Poland		Ukraine		Norway
Pool B							
	Spain		Czech Republic		Ireland		Austria

Men's Division 2					
Pool A					
	Switzerland		Italy		Portugal
Pool B					
	Hungary		Netherlands		Sweden
Pool C					
	Belgium		Slovakia		Poland
Pool D					
	Denmark		Ireland		Austria

